

COMMON PIG BREEDS OF MEGHALAYA

Duroc

Niang Khasi (Niangmegha)

TND Breed

Hampshire

A PIGGERY BREEDING FARM SITE SHOULD BE LOCATED FAR FROM HUMAN DWELLINGS. MOST SUITABLE LOCATION IS NEAR PADDY FIELDS AS PIG DUNG IS GOOD MANURE FOR BOTH PADDY AND FISH.

SITE SHOULD BE PROPERLY LEVELLED

MODERN PIGSTY FOR
12 PIGS (2:10)Rs.2.5 lakhs (Private investment)

Contact:
Directorate of Animal Husbandry & Veterinary
Lumdingri
Shillong - 793002
Email - meghvety@gmail.com, Ph - 0364-2548388

Content Developed by
MEGHALAYA INSTITUTE OF ENTREPRENEURSHIP (MIE)
And
VOCATIONAL TRAINING CENTER (VTC)
Kyrderkulai
Department of Animal Husbandry and Veterinary
Government of Meghalaya
Shillong

Published by
MEGHALAYA INSTITUTE OF ENTREPRENEURSHIP (MIE)
Under the aegis of
INTEGRATED BASIN DEVELOPMENT & LIVELIHOOD PROMOTION PROGRAMME (IBDLP)

Top Floor
MATI Building
IGP Point
Shillong - 793001
Ph - 0364-2501407
EMAIL- mieshillong@gmail.com

MODEL PIGSTY FOR PIGS
(1:1:6)Rs.81,600/- (Bank Financed)

MODEL LOCAL PIGSTY (1:3) WITH OWN RESOURCES

APROXIMATE COST OF SHED FOR 1:5 BREEDING UNIT

CRITERIA FOR SELECTING GOOD QUALITY PIGLETS

WHEN TO GIVE SERVICE/MATING & SIGNS THAT A SOW IS READY FOR N.S./A.I

WHEN TO GIVE SERVICE/MATING & SIGNS THAT A SOW IS READY FOR N.S./A.I

Plank/Bally posts one pickup	₹ 2,000.00
C.G.I Sheet 7 feet long 6 nos	₹ 1,500.00
Cements 5 bags Rs-350/ bag	₹ 1,950.00
Soling stones 1 pickup truck	₹ 2,000.00
Stones aggregates 1 pickup	₹ 3,000.00
River sand 1/2 pickup truck	₹ 1,500.00
Labourer 20 man-day's	₹ 8,000.00
Total = ₹ 19,950/-L.S.	₹ 20,000.00

Select only piglets having 14 or 16 mammary teats, reject those having 13 or 15 nos.

Body length should be elongated physically.

Purchase piglets of which you are sure that proper Deworming and C.S.F. vaccination has been done regularly.

Weigh the piglet on the date of purchase and compare the weight after 1 week/10 days.

Compare the feed consumption and weight gain. Ideal ratio is 1:3 (1kg wt: 3kg feed).

Do not breed the gilt/sow if the body weight is less than 30 kg/60kg.

Gilts/Sows come to heat at 8-10 months of age /45-60 days after farrowing.

Swelling of the vulva which lasts up to 72 hours/three days together with a whitish discharge from the vulva.

The Gilts/Sows show uneasiness & want to leave the pen on hearing the sound of the Boar/Young boar.

Put pressure on the back of the sow and if the sow does not move away she is ready for mating.

When the door is opened the Gilt/Sow comes out easily into the passage.

A little push at the Door it comes out into the open paddock.

SELECTING THE RIGHT BOAR

MATING THE SOW WITH RIGHT BOAR:TND BOAR & HAMPSHIRE SOW

DO NOT MATE GILT WITH OVERSIZED BOAR

PREGANT GILT/SOW AFTER NATURAL SERVICES

CARE OF SOW AFTER FARROWING
DO NOT PULL THE PLACENTA

MIX MINERAL MIXTURE IN FEED FOR PREGNANT GILT/SOW

Illustrated Manual for **Pig Breeders** of Meghalaya

The young Boar should not be too big for the Gilt/Sow to bear the mounting.

The intended boar should have a minimum of 14/16 mammary teats.

He should not be from the Same mother/litter

The boar should not be a Cryptorchid.

Minimum gap between N.S. should be eight days.

If using A.I check the motility of Sperms - it should be more than 60 %.

Provide Natural Services (mating of Pigs) within 24 hours of heat period and repeat after 12 hours.

Don't mate with oversized boars as mating with the bigger males usually lead to posterior paralysis of Sows after farrowing.

If the Gilt/Sow does not come into heat after 18-21 days, it is confirmed that the animal has conceived.

110-114 days is the Gestation period.



2 STEP FORMULA

- Step 1: DEWORMING
- Step 2: VITAMIN SUPPLEMENTATION

DEWORM SOWS 3 WEEKS BEFORE FARROWING

Self removal of retained placenta is not to be done - seek professional advice.

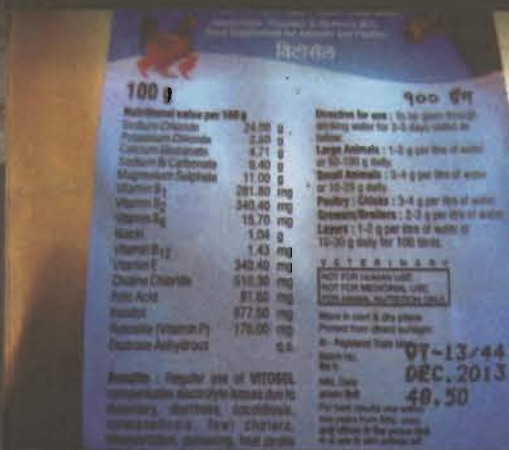
Removal of retained placenta helps the sows to come to heat early.

Feed the sow extra feed. For each piglet extra ration of 200gm is needed.

Mix mineral mixture in sow feed for 21 days after farrowing.

Deworm sows 40 days after farrowing.

Proper cleaning of membranes by jharan and dipping of umbilical cord in antiseptic solution.



Commonly available mineral mixture

HOME FORMULA OF PIG RATION

	CREEP RATION	STARTER RATION	GROWER RATION	FINISHER RATION
MAIZE CRUSH	63 KG	64 KG	65 KG	62 KG
GROUND NUT CAKE	20 KG	18 KG	15 KG	10 KG
WHEAT BRAN	05 KG	11 KG	14 KG	24.5 KG
FISH MEAL	7.25 KG	6.25 KG	5.25 KG	3 KG
SKIMMED MILK POWDER (SMP)	4 KG			
SALT	0.5 KG	0.5 KG	0.5 KG	0.5 KG
MINIRAL MIX+ VITAMINS	0.25 KG	0.25 KG	0.25 KG	0.25 KG
TOTAL	100 KG	100 KG	100 KG	100 KG

SOURCE : DEPARTMENT OF GENETICS & ANIMAL BREEDING , COLLEGE OF VETERINARY SCIENCE :: BIRSA AGRICULTURAL UNIVERSITY ::RANCHI

PROPER STORING OF PIG FEED

Raised plat form to protect from Rodents



Plat form on C.C. Floor

CARE OF SOW AND PIGLETS

SOW IN FARROWING PEN
Provide a box to hold new born piglets

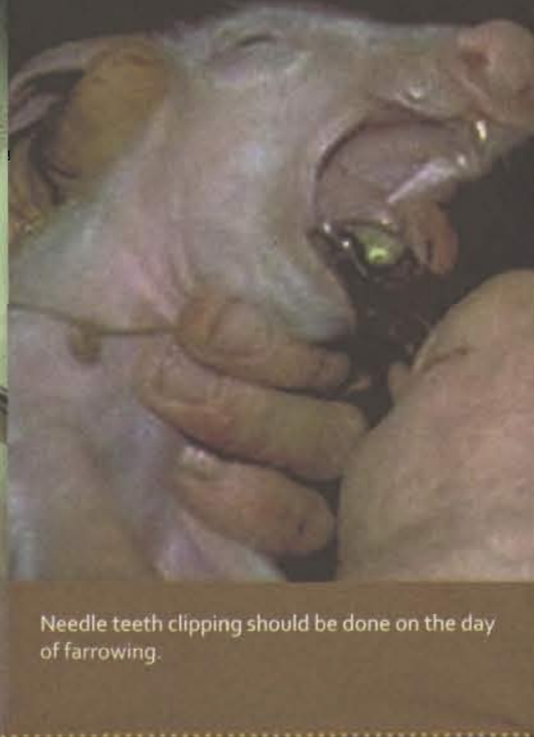


Provide a 100 watt bulb in the box to keep piglets warm and dry



Keep dry gunny bags / Paddy straw in pig bedding so that piglets are warm & dry while suckling.

Numbering of a piglet by notching method for easy identification and proper medication.



Needle teeth clipping should be done on the day of farrowing.

PIGLET MANAGEMENT

Feed the piglet according to weight, if piglet weight is 10kg, feed should be 400gm/ day.

Weigh the piglet every 10 days to know the weight gain and feed accordingly.

Deworming of piglet at weaning age/60 days.

Swine fever injection at 70 days of age.

CSF Booster dose injection at 200 days of age.



SWINE FEVER PREVENTION

Purchase the piglets from the farm where you are sure that their pigs gets regular CSF vaccination.

Swine fever injection is a must for sow immunity against CSF.

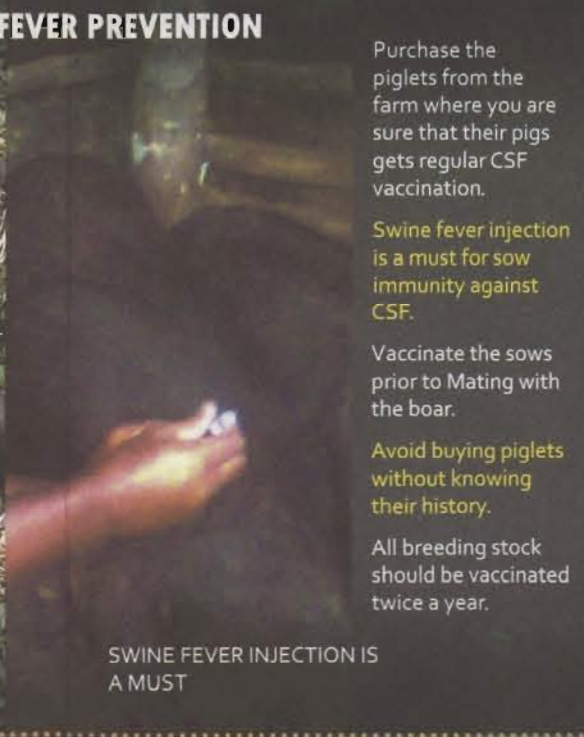
Vaccinate the sows prior to Mating with the boar.

Avoid buying piglets without knowing their history.

All breeding stock should be vaccinated twice a year.

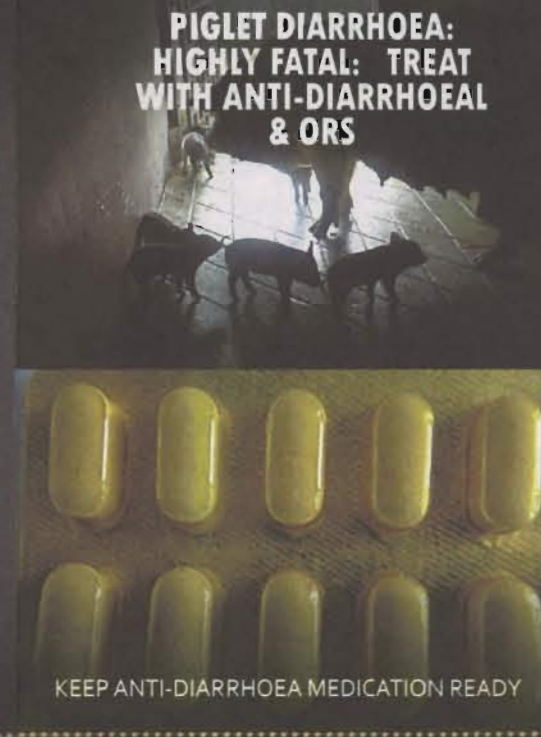


PIGLET SUFFERING FROM SWINE FEVER



SWINE FEVER INJECTION IS A MUST

PIGLET DIARRHOEA: HIGHLY FATAL: TREAT WITH ANTI-DIARRHOEAL & ORS



KEEP ANTI-DIARRHOEA MEDICATION READY

HOW TO PREVENT SKIN DISEASES

Wall of the shed should be polished up to 2 feet height.

Ivermectin injection helps to treat this ailments but exact dose is needed otherwise it may lead to poisoning.

To prevent flies from laying eggs in the wound, treat with Ointments having fly repellent action.



FLY REPELLING OINTMENT

SALE OF WEANED PIGLETS

Pig traders generally offer better prices for black colored piglets.

Black color piglets with white stripes generally fetch lower prices than the completely black ones.

Traders negotiate prices for individual piglets on lump sum price, not on weight basis - selling by weight is more profitable.

White colored piglets are generally not preferred by buyers.

After the price is settled, 25-30 % of the cost is normally paid as advance and buyers lift one day before market day.

The balance amount is paid at the time of lifting.



PIG REARER SHOWING THE PIGLETS & DISCUSSING THE PRICE WITH PIG TRADER

